

Powered by DNS

nobreak@kr.FreeBSD.org

3rd Edition, 2000 7 3 , Revision 3.3

HTML(Divided) HTML(Combined) SGML(DocBook) ASCII PDF

<http://www.kr.FreeBSD.org/doc/PoweredByDNS/>

. This document can be freely translated and distributed. It's released under the LDP License.

Table of Contents

1. Domain Name System
 - 1.1. DNS Namespace
 - 1.2. Domain Name Resolving
 - 1.3. 가
2. Name Server
 - 2.1. Name Server
 - 2.2. BIND(Berkeley Internet Name Daemon)
 - 2.3. (Public Domain)
 - 2.4. (Inverse Domain)
 - 2.5. Name Server
 - 2.5.1. BIND-4 named.boot
 - 2.5.2. BIND-8 named.conf
 - 2.5.3. (Resource Record)
 - 2.5.4. Zone
 - 2.6. Name Server
 - 2.7. Name Server
3. (Resolver)
 - 3.1. Unix
 - 3.2. Microsoft Windows
4. (Domain Parenting & Delegation)
 - 4.1. Zone
 - 4.2.
 - 4.3. in-addr.arpa
 - 4.4. Classless in-addr.arpa
5. DNS Sendmail
 - 5.1. MX
 - 5.2. MX
 - 5.3. MX CNAME
 - 5.4. Nonrecursive MX lookup
 - 5.5. Sendmail Virtual Domain
 - 5.5.1. m4 sendmail.cf
 - 5.5.2. Forward-map
 - 5.5.3. Reverse-map
 - 5.5.4.
6. BIND /
 - 6.1. BIND
 - 6.2. BIND Syslog
 - 6.3. BIND Syslog /
 - 6.4. BIND Statistics
 - 6.5. BIND Debugging Output
7. DNS
 - 7.1. NSLOOKUP

- 7.1.1.
- 7.1.2.
- 7.1.3.
- 7.1.4. Zone Transfer
- 7.1.5. .nslookuprc
- 7.2. DIG
- 7.3. DNSWALK
- 8. Miscellaneous
 - 8.1. FQDN(Fully Qualified Domain Name)
 - 8.2. DNS BIND
 - 8.3. BIND-4(Traditional) BIND-8(Next Generation) 가
 - 8.4. (Public Domain)
 - 8.5. CNAME
 - 8.6. Zone
 - 8.7. (Glue Record)
 - 8.8. Lamé Delegation
 - 8.9. Authoritative answer & Non-authoritative answer
 - 8.10. Positive & Negative Caching
 - 8.11. Iterative(Nonrecursive) & Recursive
 - 8.12. RTT(Round Trip Time) Nameserver
 - 8.13.
 - 8.14. Serial Number
 - 8.15. IP TTL
 - 8.16.
- 9. Bibliography

List of Figures

- 1-1. Namespace
- 1-2. Resolving
- 2-1.
- 3-1. Windows NT Resolver
- 4-1. Domain Delegation Namespace
- 6-1.
- 7-1.

Chapter 1. Domain Name System

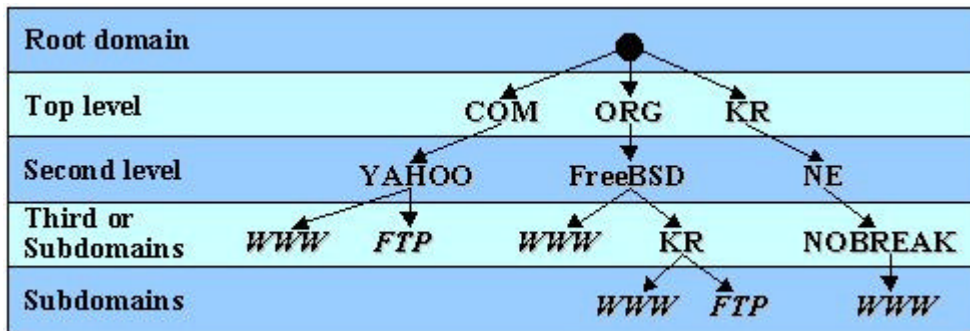
Domain Name System IP
 IP(Internet Protocol), IP
 210.105.79.103 IP , IP
 가 , IP
 ARPANET IP Address
 , DNS .

ARPANET 가 NIC(Network Information Center)
 (HOSTS.TXT) /etc/hosts .
 가 가 , 1983 Paul
 Mockapetris가 RFC882, RFC883(RFC1034)
 , , Email DNS가

1.1. DNS Namespace

ARPANET , DNS
 Figure 1-1 .

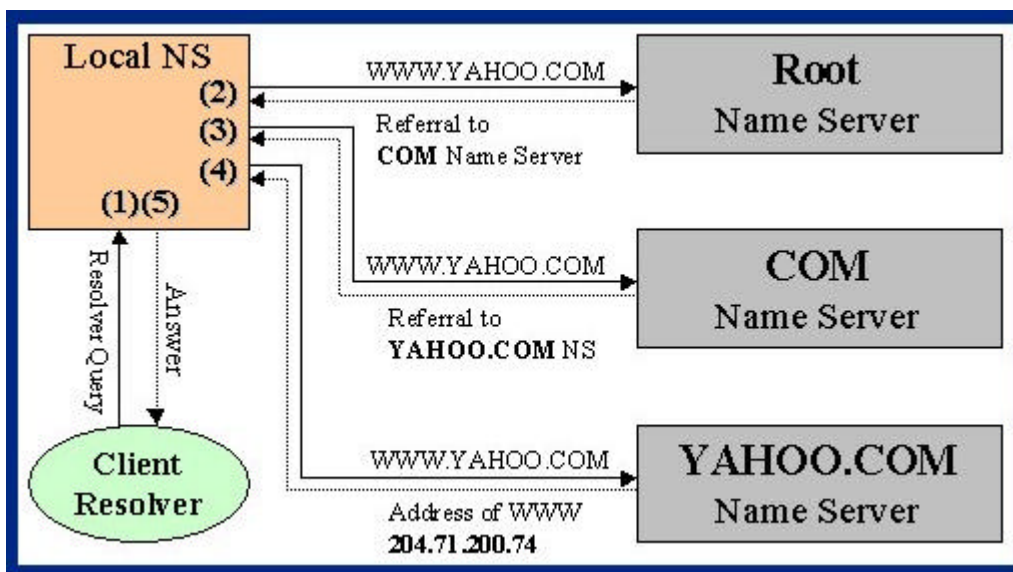
Figure 1-1. Namespace



, Top level
 , Root domain() Top level
 (NS:Name Server)
 YAHOO.COM COM , WWW.YAHOO.COM YAHOO.COM
 AV.YAHOO.COM
 가 가 가

1.2. Domain Name Resolving

Figure 1-2. Resolving



TCP/IP
 (Resolving)
 1. Client WWW.YAHOO.COM Local Name Server(TCP/IP)
 2. Local NS 가 Root NS WWW.YAHOO.COM Root NS(Root NS)
 , COM NS
 3. Local NS COM NS , COM NS YAHOO.COM NS (2)
 () COM Root NS
 YAHOO.COM NS .)

4. Local NS YAHOO.COM NS . YAHOO.COM NS
 NS , WWW.YAHOO.COM IP 204.71.200.74 (authoritative answer)
 . (WWW.YAHOO.COM IP resolving IP 가
 IP , 가 . (: ,)
5. , Local NS Client .

1.3. 가

: RFC1035 p7, RFC1032 p2

'A-Z', 'a-z', '0-9', '-' 가 ,
 . ([RFC1035] ,
 [RFC1123 p12] 3com.com .) /
 (Each segment) 63 (octet)
 (NIC 12), / .
 , (KRNIC, Internic(Network Solutions)) ,
 . KRNIC 63
 , Internic 22 .
 Email RFC822 가
 . , ,
 (:411.com) .
)

Chapter 2. Name Server

2.1. Name Server

Primary, Secondary, Cache only server .

Primary server , Secondary server
 back-up copy 가 . Secondary Primary가

Primary, Secondary 가 , Secondary
 Primary가
 2 (Primary * 1, Secondary * n) 가 .(Resolver
 Primary Secondary가 Primary 가
)

Cache only server , resolving . ,
 가 Primary, Secondary Name server가 ,
 Local DNS server가 resolving 가
 () 가 , 가
 가 . Cache only server

2.2. BIND(Berkeley Internet Name Daemon)

Name server, BIND db Unix
가
BIND가 . /usr/sbin in.named named가 . (BIND가
BIND가)
\$ dig @ns.nobreak.com txt chaos version.bind. | grep VERSION
VERSION.BIND. OS CHAOS TXT "8.2"
ISC(Internet Software Consortium) BIND 가
가 , BIND-4가 , BIND-8
BIND . ISC FTP
make clean depend all install
rc BIND가
(FreeBSD: /etc/rc.conf, /etc/rc.network, Solaris: /etc/init.d/inetsvc, Linux: /etc/rc.d/init.d/named)
Windows NT, OS/2, MacOS BIND
<http://www.dns.net/dnsrd/docs/exotic.html>

2.3. (Public Domain)

Primary, Secondary 가
("YourDomain.COM" Internic, YourDomain.CO.KR Knic)
(
, 가
2. Complete Domain Name.....: NOBREAK.COM
7a. Primary Server Hostname....: NS.NOBREAK.COM
7b. Primary Server Netaddress...: 210.105.79.2
8a. Secondary Server Hostname...: NS2.NOBREAK.COM
8b. Secondary Server Netaddress: 210.105.79.3
"NOBREAK.COM"
\$ nslookup -type=ns nobreak.com
Server: ns.nobreak.com
Address: 0.0.0.0
nobreak.com nameserver = ns.nobreak.com
nobreak.com nameserver = ns2.nobreak.com
ns.nobreak.com internet address = 210.105.79.2
ns2.nobreak.com internet address = 210.105.79.3
가
*** local.name.server can't find nobreak.com.: Non-existent host/domain

" NOBREAK.COM
NS2.NOBREAK.COM
NS.NOBREAK.COM,
?" "NS.NOBREAK.COM NOBREAK.COM
?"
가 ' . (: "

)

2.4. (Inverse Domain)

IP
Service Provider) IP
in-addr.arpa
ISP(Internet 가

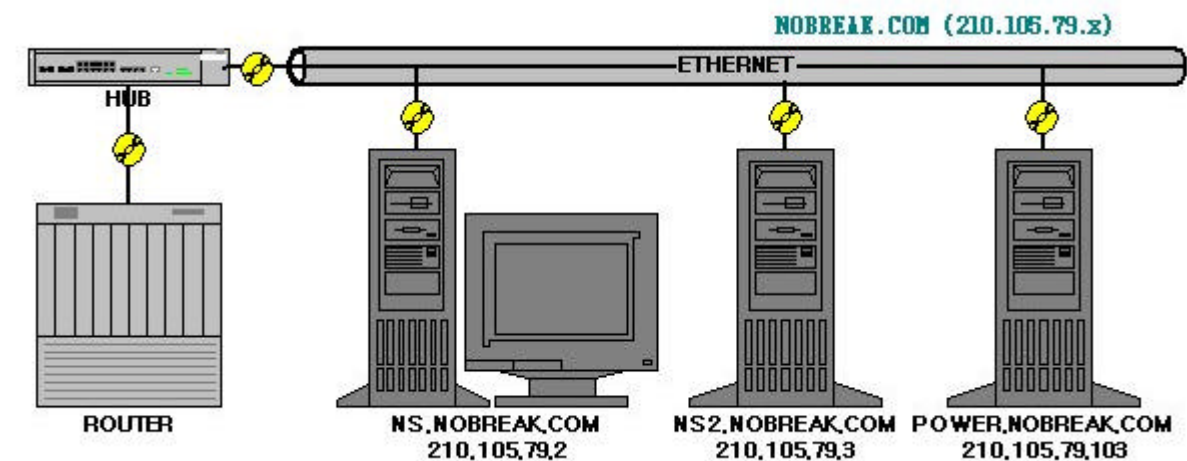
```
$ nslookup -type=ns 79.105.210.in-addr.arpa (C Class 210.105.79.x )
Server: ns.nobreak.com
Address: 0.0.0.0

79.105.210.in-addr.arpa nameserver = ns.nobreak.com
79.105.210.in-addr.arpa nameserver = ns2.nobreak.com
ns.nobreak.com internet address = 210.105.79.2
ns2.nobreak.com internet address = 210.105.79.3
```

가 , , ISP
*** ns.nobreak.com can't find 79.105.210.in-addr.arpa.: Non-existent host/domain

2.5. Name Server

nobreak.com 가
Figure 2-1.



가 3 . DNS , IP
ns(primary), ns2(secondary)
, 2 NS, 3 NS2 , IP 1(NOBREAK.COM
Internic , NS.NOBREAK.COM, NS2.NOBREAK.COM

named.boot

```

BIND - 4      named.boot BIND      ,
Primary/Secondary      .      /etc/named.boot      ,
1      ;      BIND      .
directory /var/named
directory      .
      . (      /var/named, /etc/named
/etc/namedb )
cache . named.root
cache      가      가
. BIND      ,
. /var/named/named.root
Internic      ftp://ftp.rs.internic.net/domain/named.root
Cron
primary nobreak.com zone-nobreak.com
Primary      nobreak.com      가
Primary ,      /var/named/zone-nobreak.com
secondary nobreak.com 210.105.79.2 sec-nobreak.com
Secondary      Primary      IP
Primary      zone      . 210.105.79.2      ,
(zone transfer)      /var/named/sec-nobreak.com      nobreak.com

```

Figure 2-1

```

* NS.NOBREAK.COM(Primary NS)      /etc/named.boot
directory                          /var/named
cache                              named.root
primary    0.0.127.in-addr.arpa    zone-0.0.127.in-addr.arpa      ; loopback
primary    79.105.210.in-addr.arpa zone-79.105.210.in-addr.arpa ; Reverse ZONE
primary    nobreak.com             zone-nobreak.com              ; Forward ZONE

0.0.127.in-addr.arpa  loopback      127.0.0.1                . loopback      가
                        , 'primary 0.0.127.in-addr.arpa ...'
                        C Class IP    210.105.79                nobreak.com      .

* NS2.NOBREAK.COM(Secondary NS)   /etc/named.boot
directory                          /var/named
cache                              named.root
primary    0.0.127.in-addr.arpa    zone-0.0.127.in-addr.arpa
secondary  79.105.210.in-addr.arpa 210.105.79.2  sec-79.105.210.in-addr.arpa
secondary  nobreak.com             210.105.79.2  sec-nobreak.com

Secondary                . loopback   Primary                . Secondary
(/var/named/zone-0.0.127.in-addr.arpa      )

Secondary                Primary                , sec-79.105.210.in-addr.arpa,
sec-nobreak.com          .

```

2.5.2. BIND-8

named.conf

BIND-4 BIND-8 가 BIND-8
가 BIND-4 , 가 ,
named.conf C
BIND-4 BIND-4 BIND-8 BIND-8
<http://www.isc.org/products/BIND/docs/>

Primary

```
* NS.NOBREAK.COM(Primary NS) /etc/named.conf
// BIND-8 ';'
options {
    directory "/var/named"; // Zone
    dump-file "/var/tmp/named_dump.db"; // Dump
    statistics-file "/var/tmp/named.stats"; //
    pid-file "/var/run/named.pid"; // ID가
};
logging { //
    category lame-servers { null; };
    category cname { null; };
    category response-checks { null; };
    category notify { null; };
};
zone "." IN { //
    type hint;
    file "named.root";
};
zone "0.0.127.in-addr.arpa" IN { // localhost Primary
    type master;
    file "zone-0.0.127.in-addr.arpa";
};
zone "79.105.210.in-addr.arpa" IN { // IP Reverse Zone
    type master;
    file "zone-79.105.210.in-addr.arpa";
};
zone "nobreak.com" IN { // nobreak.com Forward Zone
    type master;
    file "zone-nobreak.com";
};
```

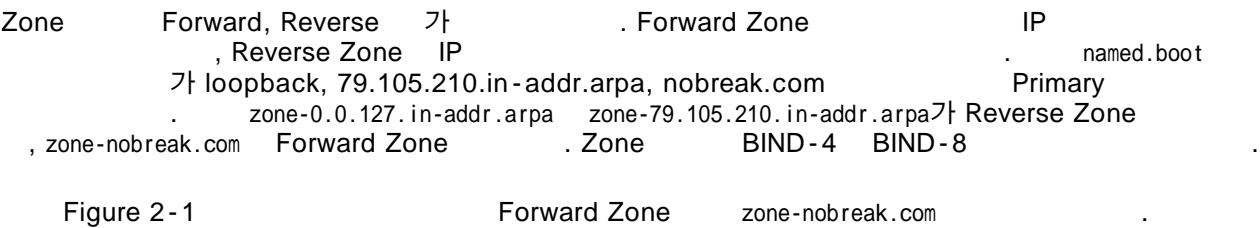
Secondary

```
* NS2.NOBREAK.COM(Secondary NS) /etc/named.conf
options {
    directory "/var/named";
};
logging {
    category lame-servers { null; };
    category cname { null; };
};
zone "." IN {
    type hint;
    file "named.root";
};
zone "0.0.127.in-addr.arpa" IN { // localhost Primary
    type master;
    file "zone-0.0.127.in-addr.arpa";
};
```



```
zone "79.105.210.in-addr.arpa" IN { // Reverse Zone      Secondary
    type slave;
    file "sec-79.105.210.in-addr.arpa";
    masters { 210.105.79.2; }; // Primary NS      IP
};
zone "nobreak.com" IN {           // nobreak.com      Secondary
    type slave;
    file "sec-nobreak.com";
    masters { 210.105.79.2; };
};
```

2.5.3. (Resource Record)



2.5.3.1. SOA (Start Of Authority)

Zone SOA . SOA , nobreak.com 가

(authoritative) , 가 , .

```
nobreak.com. IN SOA ns.nobreak.com. hostmaster.nobreak.com. (
    1998122800 ;Serial
    21600      ;Refresh ( 6 hours)
    1800       ;Retry  (30 minutes)
    1209600    ;Expire  (14 days)
    86400      ;Minimum ( 1 day)
```

1 Zone .

'@' .

@ IN SOA ns.nobreak.com. hostmaster.nobreak.com. (

IN(Internet) . HS, HESIOD, CHAOS ,

IN .

SOA Primary Email 가 . hostmaster.nobreak.com. Email

, Email '@' . Email

(Responsible Person) 가 . Namespace

lamers 가 Email

.

Serial, Refresh, Retry, Expire, Minimum 5 () 가 .

Minimum 4 Secondary . ' , , ,

M(Minute), H(Hour), D(Day), W(Week) 30M, 8H, 2D, 1W .

- Serial: Serial Secondary가 Zone . Secondary Zone
- Serial Primary Serial Zone
- Serial , Secondary
- . Secondary가 Serial 가 Zone
- Serial 가 .

- Serial 가 YYYYMMDDNN

- Refresh: Primary Zone Secondary가 Zone
Zone , 3H(10800) Zone
6H(21600) - 12H
- Retry: Secondary , Primary Refresh
가 , 30M(1800) - 1H
- Expire: Secondary가 Expire Primary ,
가 ,
1W - 2W(1209600)
- Minimum: 가 Zone , ()
TTL(Time To Live)
가
Minimum SOA 1D(86400)
1H - 3H 0

2.5.3.2. NS(Name Server)

NS

```
nobreak.com. IN NS ns.nobreak.com.
IN NS ns2.nobreak.com.
```

NS , Namespace
가 NS ,

2.5.3.3. A(Address) & CNAME(Canonical Name)

A IP . mail power A IP .
(mail mail.nobreak.com. .)

```
; Host addresses
mail.nobreak.com. IN A 210.105.79.2
power IN A 210.105.79.103
; Aliases
www IN CNAME power.nobreak.com.
ftp IN CNAME www
```

CNAME 가 power.nobreak.com,
www.nobreak.com, ftp.nobreak.com IP 210.105.79.103 ftp CNAME
CNAME , DNS , 가
CNAME , CNAME
가 , MX, NS BIND
CNAME
CNAME
(: CNAME)
ftp IN CNAME www ; (X) CNAME 가
IN MX mail ;
power IN MX 10 mail ; (X) MX CNAME
mail IN CNAME ns ; 가

2.5.3.4. MX(Mail eXchanger)

MX
account@nobreak.com mail.nobreak.com.
mail.nobreak.com. power.nobreak.com
. MX Priority_Number , Priority_Number 가 . MX

nobreak.com. IN MX 10 mail.nobreak.com.
IN MX 20 power.nobreak.com.
mail.nobreak.com. IN A 210.105.79.2
power.nobreak.com. IN A 210.105.79.103

MX CNAME . MTA(Mail
Transfer Agent: sendmail)
MTA , 가 .

nobreak.com. IN MX 10 mail.nobreak.com. ; (X)
mail.nobreak.com. IN CNAME power.nobreak.com.
power.nobreak.com. IN A 210.105.79.103

2.5.3.5. PTR(Pointer)

PTR IP , Reverse Zone . IP
210.105.79.2 .

2.79.105.210.in-addr.arpa. IN PTR ns.nobreak.com.

Forward Zone A(CNAME) IP , PTR
, IP .

2.5.3.6.

Zone , 가
RFC1035, RFC1183, RFC2163 .

power IN A 210.105.79.103
IN HINFO "Sun Sparc Ultra 5" "Solaris 2.6"
IN TXT "Nobreak's Primary Server"
IN TXT "WWW, FTP is now available"
IN RP hostmaster.nobreak.com. hostinfo.nobreak.com.
hostinfo IN TXT "Seung-young Kim, +82-42-864-4440/1"

HINFO(Host INfOrMation) (CPU , OS)

TXT(TeXT) . RP(Responsible Person)
, Email (@) , (TXT
) . HINFO .

2.5.4. Zone

Figure 2 - 1 Forward Zone zone-nobreak.com

.									
* nobreak.com Forward Zone /var/named/zone-nobreak.com									
@	IN	SOA	ns.nobreak.com.	hostmaster.nobreak.com.	(1998122801	;Serial		
			21600				;Refresh (6 hours)		
			1800				;Retry (30 minutes)		
			1209600				;Expire (14 days)		
			86400)				;Minimum (1 day)		
	IN	NS	ns.nobreak.com.						
	IN	NS	ns2.nobreak.com.						
	IN	MX 10	mail				;		
mail	IN	A	210.105.79.2						
; Hosts Here - This is comments									
router	IN	A	210.105.79.1						
ns	IN	A	210.105.79.2						
ns2	IN	A	210.105.79.3						
power	IN	A	210.105.79.103						
	IN	HINFO	"Sun Sparc Ultra 5"				"Solaris 2.6"		
	IN	TXT	"Nobreak Technologies, Inc."						
www	IN	CNAME	power						
Reverse Zone zone-79.105.210.in-addr.arpa									
.									
* Reverse Zone /var/named/zone-79.105.210.in-addr.arpa									
@	IN	SOA	ns.nobreak.com.	hostmaster.nobreak.com.	(1998122801	;Serial		
			21600				;Refresh (6 hours)		
			1800				;Retry (30 minutes)		
			1209600				;Expire (14 days)		
			86400)				;Minimum (1 day)		
	IN	NS	ns.nobreak.com.						
	IN	NS	ns2.nobreak.com.						
; IP-Domain mapping here									
1	IN	PTR	router.nobreak.com.						
2	IN	PTR	ns.nobreak.com.						
3	IN	PTR	ns2.nobreak.com.						
103	IN	PTR	power.nobreak.com.						
loopback Reverse Zone . IP 127.0.0.1 localhost.									
,									
.									
* loopback Reverse Zone /var/named/zone-0.0.127.in-addr.arpa									
@	IN	SOA	ns.nobreak.com.	hostmaster.nobreak.com.	(1998122801	;Serial		
			21600				;Refresh (6 hours)		
			1800				;Retry (30 minutes)		
			1209600				;Expire (14 days)		
			86400)				;Minimum (1 day)		
	IN	NS	ns.nobreak.com.						
	IN	NS	ns2.nobreak.com.						
; IP-Domain mapping here									
1	IN	PTR	localhost.						
Zone FQDN . BIND									
, ns.nobreak.com ns.nobreak.com.nobreak.com.									
ns.nobreak.com. FQDN , ns									
,									
.									

	Zone	Zone IP	가
	가		가/ /

```

* named.boot (BIND-4)
primary      netbsd.org          zone-default
primary      openbsd.org         zone-default
...
primary      freebsd.org         zone-freebsd.org ; 가
...

* named.conf (BIND-8)
zone "netbsd.org"      IN { type master; file "zone-default"; };
zone "openbsd.org"     IN { type master; file "zone-default"; };
...
zone "freebsd.org"     IN { type master; file "zone-freebsd.org"; };
...

* zone-default
@              IN      SOA      ns.nobreak.com. hostmaster.nobreak.com. (
                                1999030601 ;serial
                                21600      ;Refresh ( 6 hours)
                                1800       ;Retry  (30 minutes)
                                1209600    ;Expire  (14 days)
                                86400      ;Minimum ( 1 day)
                                IN      NS   ns.nobreak.com.
                                IN      NS   ns2.nobreak.com.
                                IN      A    210.105.79.39
                                IN      MX  10 @
                                IN      MX  20 mqueue.nobreak.com.

www            IN      CNAME     @
telnet         IN      CNAME     @
ftp            IN      CNAME     @
mail           IN      CNAME     @
pop            IN      CNAME     @
news           IN      CNAME     news.nobreak.com.

* zone-freebsd.org
$INCLUDE zone-default

ftp.kr         IN      A          147.46.102.39
www.kr         IN      CNAME     @

```

2.6. Name Server

```

* NS.NOBREAK.COM (BIND-8)
# ls /etc/named.conf      # BIND-8
/etc/named.conf
# ls /var/named/          # Zone
named.root
zone-0.0.127.in-addr.arpa
zone-79.105.210.in-addr.arpa
zone-nobreak.com
# /usr/sbin/named        #
# ps ax | grep named     #
254 ? S 0:00 named

```

(Solaris: /usr/sbin/in.named)
(Solaris: ps -e | grep in.named)

```
* NS2.NOBREAK.COM (BIND-4)
# ls /etc/named.boot      # BIND-4
/etc/named.boot
# ls /var/named/          # Zone
named.root
zone-0.0.127.in-addr.arpa
# ndc start               # ndc(Name Daemon Control)가
Name Server Started
# ndc status
254 ? S 0:00 named
# ls /var/named/          # Primary Zone
named.root
sec-79.105.210.in-addr.arpa
sec-nobreak.com
zone-0.0.127.in-addr.arpa
```

2.7. Name Server

[3] 가 , Namespace 가

```
$ nslookup power.nobreak.com ns.nobreak.com # Primary
Server: ns.nobreak.com
Address: 0.0.0.0

Name: power.nobreak.com
Address: 210.105.79.103

$ nslookup power.nobreak.com ns2.nobreak.com # Secondary
Server: ns2.nobreak.com
Address: 210.105.79.3

Name: power.nobreak.com
Address: 210.105.79.103

$ nslookup power.nobreak.com ns.kornet.ne.kr # Namespace
Server: ns.kornet.nm.kr
Address: 168.126.63.1

Name: power.nobreak.com
Address: 210.105.79.103
```

3가 가 , Zone 가 BIND

Chapter 3. (Resolver)

3.1. Unix

```
Unix DNS /etc/resolv.conf , /etc/nsswitch.conf
. /etc/resolv.conf Resolving 3
Primary, Secondary, ISP 3

search nobreak.com # (Suffix)
nameserver 210.105.79.2 # ns.nobreak.com
nameserver 210.105.79.3 # ns2.nobreak.com
```

```

nameserver 168.126.63.1 # ns.kornet.ne.kr (      ISP      NS)

'search nobreak.com'

search nobreak.com kr.freebsd.org

www      www.nobreak.com
www.kr.freebsd.org
search

search nobreak.com

domain nobreak.com
nameserver 210.105.79.2
...

domain kornet.ne.kr
nameserver 168.126.63.1
...

가      DNS      OS      /etc/nsswitch.conf      'hosts:'      'dns'가

hosts:      files dns

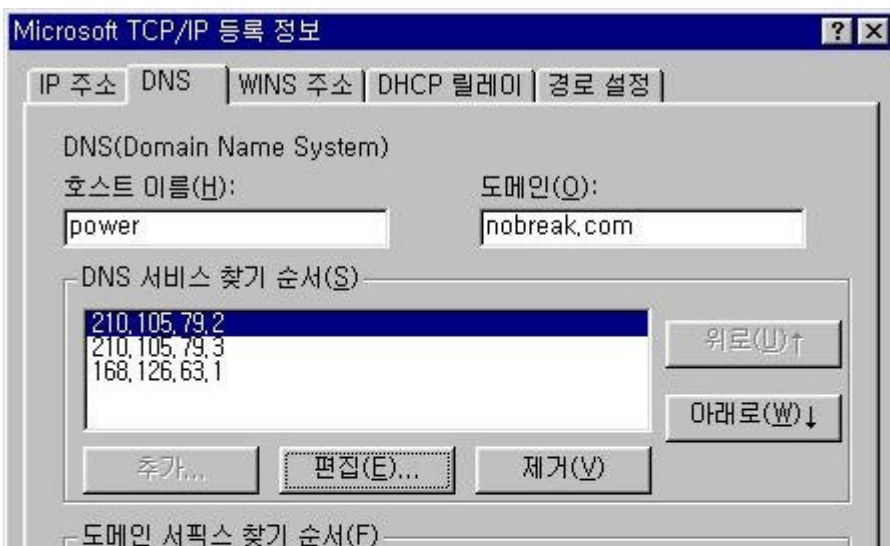
files      /etc/hosts      (files, dns)

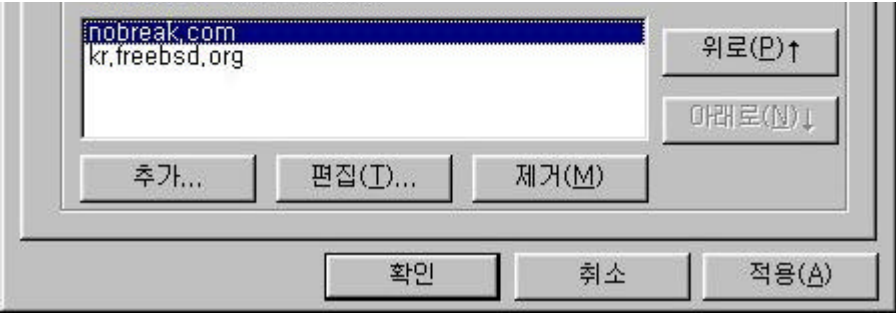
```

3.2. Microsoft Windows

Windows Unix /etc/resolv.conf , Figure 3-1 DNS

Figure 3-1. Windows NT Resolver





DNS PC , , . Unix resolv.conf , 'domain' , 'DNS 'nameserver' , 'search'

Chapter 4. (Domain Parenting & Delegation)

가 , www.core.nobreak.com 가 , .

Figure 4-1. Domain Delegation Namespace

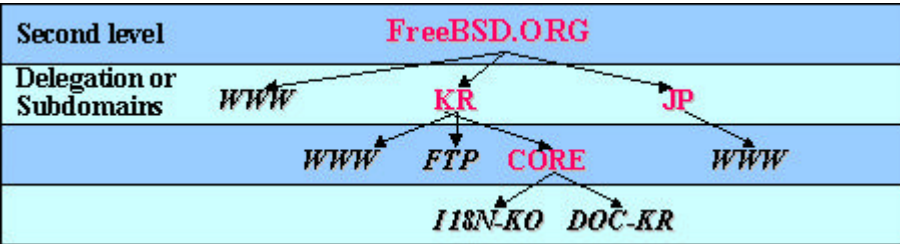


Figure 4-1 .FreeBSD.ORG 가 KR.FreeBSD.ORG CORE , doc- kr.core.kr.FreeBSD.org 가 .

4.1. Zone

 . nms.nobreak.com Zone , DNS

```
* zone-nobreak.com (NS.NOBREAK.COM)
nms                IN      MX 10  mail.nms
                   IN      MX 20  mail2.nms
dns.nms            IN      A      150.183.110.53
                   IN      MX 10  mail.nms
                   IN      MX 20  mail2.nms
mail.nms           IN      A      150.183.110.10
mail2.nms          IN      A      150.183.110.11

nobreak.com        SOA      가                      ,                      nms.nobreak.com
SOA                가                      .
```


nms.nobreak.com 가 nobreak.com
NS
nms ns.nms.nobreak.com .

```
* zone-nobreak.com (NS.NOBREAK.COM)
nms                IN      NS      ns.nms           ; Delegation
                   IN      NS      ns2.nms
ns.nms              IN      A       150.183.110.2   ; Glue Record
ns2.nms             IN      A       150.183.110.3
```

IP (: A) , NS .

ns.nms.nobreak.com primary

```
* named.boot (NS.NMS.NOBREAK.COM)
primary      nms.nobreak.com      zone-nms.nobreak.com
```

, Zone zone-nms.nobreak.com

```
* zone-nms.nobreak.com (NS.NMS.NOBREAK.COM)
@           IN      SOA      ns.nms.nobreak.com. hostmaster.nms.nobreak.com. (
                        1999012901  ;Serial
                        21600       ;Refresh ( 6 hours)
                        1800        ;Retry  (30 minutes)
                        1209600     ;Expire  (14 days)
                        86400)      ;Minimum ( 1 day)
           IN      NS       ns.nms.nobreak.com.
           IN      NS       ns2.nms.nobreak.com.
           IN      MX  10    mail
           IN      MX  20    mail2

ns         IN      A        150.183.110.2
ns2        IN      A        150.183.110.3
mail       IN      A        150.183.110.10
mail2      IN      A        150.183.110.11

dns        IN      A        150.183.110.53
           IN      MX  10    mail
           IN      MX  20    mail2
```

ns2.nms.nobreak.com Secondary 가 .

```
* named.boot (NS2.NMS.NOBREAK.COM)
secondary      nms.nobreak.com 150.183.110.2 sec-nms.nobreak.com
```

```
ns, ns.nms, ns2.nms BIND ,
```

```
$ nslookup -type=NS nms.nobreak.com ns.kornet.ne.kr
nms.nobreak.com nameserver = ns.nms.nobreak.com
nms.nobreak.com nameserver = ns2.nms.nobreak.com
```

```
$ nslookup dns.nms.nobreak.com ns.kornet.ne.kr
Name:      dns.nms.nobreak.com
Address:    150.183.110.53
```

4.3. in-addr.arpa

nobreak.com B 150.183 , nms.nobreak.com
150.183.110 가 .

\$ nslookup -type=NS 183.150.in-addr.arpa
183.150.in-addr.arpa nameserver = ns.nobreak.com
183.150.in-addr.arpa nameserver = ns2.nobreak.com

Inverse
183.150.in-addr.arpa 110.183.150.in-addr.arpa Zone .

* zone-183.150.in-addr.arpa (NS.NOBREAK.COM)
110 IN NS ns.nms.nobreak.com.
IN NS ns2.nms.nobreak.com.

, ns.nms.nobreak.com ns2.nms.nobreak.com primary, secondary Inverse
Zone , .

* named.boot (NS.NMS.NOBREAK.COM)
primary 110.183.150.in-addr.arpa zone-110.183.150.in-addr.arpa

* named.boot (NS2.NMS.NOBREAK.COM)
secondary 110.183.150.in-addr.arpa 150.183.110.2 sec-110.183.150.in-addr.arpa

* zone-110.183.150.in-addr.arpa (NS.NMS.NOBREAK.COM)
@ IN SOA ns.nms.nobreak.com. hostmaster.nms.nobreak.com. (
1999012901 ;Serial
21600 ;Refresh (6 hours)
1800 ;Retry (30 minutes)
1209600 ;Expire (14 days)
86400) ;Minimum (1 day)
IN NS ns.nms.nobreak.com.
IN NS ns2.nms.nobreak.com.

2 IN PTR ns.nms.nobreak.com.
3 IN PTR ns2.nms.nobreak.com.
10 IN PTR mail.nms.nobreak.com.
11 IN PTR mail2.nms.nobreak.com.
53 IN PTR dns.nms.nobreak.com.

4.4. Classless in-addr.arpa

: RFC2317

(octet)
가 . 210.105.79.1-128
nobreak.com 129-256 nms.nobreak.com .

, IP ISP , (half) , 가
가 .

79.105.210.in-addr.arpa 129-256(B) IP NS
ns.nms.nobreak.com . 79.105.210.in-addr.arpa
Zone .

Namespace 가	Inverse .	arpa	in-addr.arpa 가 IP	,	가
nms.79.105.210.in-addr.arpa					가 ,

Classless in-addr.arpa .

129.79.105.210.in-addr.arpa 129.nms.79.105.210.in-addr.arpa CNAME ,
nms.79.104.210.in-addr.arpa primary ns.nms.nobreak.com ,
.

* named.boot (NS.NMS.NOBREAK.COM)
primary nms.79.105.210.in-addr.arpa zone-nms.79.105.210.in-addr.arpa

* zone-nms.79.105.210.in-addr.arpa (NS.NMS.NOBREAK.COM)
@ IN SOA ns.nms.nobreak.com. hostmaster.nms.nobreak.com. (
1999012901 ;Serial
21600 ;Refresh (6 hours)
1800 ;Retry (30 minutes)
1209600 ;Expire (14 days)
86400) ;Minimum (1 day)
IN NS ns.nms.nobreak.com.
IN NS ns2.nms.nobreak.com.
129 IN PTR dns.nms.nobreak.com.
130 IN PTR mail.nms.nobreak.com.
...
254 IN PTR layla.nms.nobreak.com.

129-254 PTR . 79.105.210.in-addr.arpa Zone IP CNAME
DNS 가 .

Class Reverse ISP
가 가 Class
, ISP Class 가
가
IP (PC)가 Reverse
Reverse Resolving 가 가 IP
Public
가

Classless in-addr.arpa , C 210.105.79 - 210.105.81
, 81 . 가 , ISP 81.105.210.in-
addr.arpa ,
Namespace 가 ,

Chapter 5. DNS Sendmail

5.1. MX

MX , nobreak.com Sendmail .

nobreak.com. IN MX 10 layla.nobreak.com.
IN MX 20 marie.nobreak.com.
IN MX 20 suzi.nobreak.com.

1. 가 .
2. layla .
3. marie suzi .
4. (3) .

5. , 2-4 .
 MX , layla가 marie 가 , 가 marie
 MX
 ,
 , priority
 (layla) . marie suzi Sendmail

1. (nobreak.com) .

2. (Relay) .

Sendmail w (sendmail.cw sendmail.cf Cw)
 nobreak.com , 가

OS Sendmail ,
 SMTP
 IP() ,
 Feature IP) (: Allowing
 controlled SMTP relaying in Sendmail 8.9)

layla marie , (sendmail.cf
 Timeout.queuereturn=5d) (Sendmail 30 -
 q30m) . layla nobreak.com 가 .

* layla /etc/sendmail.cw (Solaris: /etc/mail/sendmail.cw)
 nobreak.com

marie suzi가 가 . layla가
 marie(suzi) , marie MX
 suzi

? . Sendmail MX
 , (sendmail.cw)
 가 (가)
 (MX) MX .

nobreak.com. IN MX 10 layla.nobreak.com.
 IN MX 20 marie.nobreak.com. ()
 IN MX 20 suzi.nobreak.com. ()

marie Sendmail MX layla , layla가

nobreak.com. IN MX 10 layla.nobreak.com.

Sendmail MX (sendmail.cw marie.nobreak.com
), suzi , suzi
 . Sendmail (sendmail.cf
 MaxHopCount=17, 25) , marie suzi MaxHopCount
 (postmaster) .

From: Mail Delivery Subsystem <MAILER-DAEMON@marie.nobreak.com>
 To: postmaster@marie.nobreak.com
 Subject: Returned mail: Too many hops 26 (25 max):...

----- The following addresses had permanent fatal errors -----
<nobreak@nobreak.com>

----- Transcript of session follows -----
554 Too many hops 26 (25 max):...

=====

Received: from suzi.nobreak.com by marie.nobreak.com ...
Received: from marie.nobreak.com by suzi.nobreak.com ...
...
Received: from suzi.nobreak.com by marie.nobreak.com ...
Received: from marie.nobreak.com by suzi.nobreak.com ...
...

가

nobreak.com.	IN	MX 10	layla.nobreak.com.
	IN	MX 20	marie.nobreak.com.

From: Mail Delivery Subsystem <MAILER-DAEMON@marie.nobreak.com>
To: postmaster@marie.nobreak.com
Subject: Returned mail: Local configuration error

----- The following addresses had permanent fatal errors -----
<nobreak@nobreak.com>

----- Transcript of session follows -----
553 marie.nobreak.com. config error: mail loops back to me (MX problem?)
554 <nobreak@nobreak.com>... Local configuration error
=====

...

DNS

		sendmail.cw
, alias		sendmail.cw

5.2. MX

가

MX

mailhub	IN	A	210.105.79.107
---------	----	---	----------------

mailhub

가

MTA가 mailhub

가

Sendmail		Sendmail	mailhub	lookup(type=any)
Authoritative	Non-authoritative Answer	A		, Authoritative Answer
MX	가	가	IP	MX
가	Non-authoritative Answer	Sendmail	MX	
mailhub	MX			mailhub

mailhub	IN	A	210.105.79.107
	IN	MX 10	mailhub.nobreak.com.

mailhub

	MX
--	----

5.3. MX CNAME

MX

CNAME

CNAME

RFC

MX

가

layla IN MX 10 marie.nobreak.com.
marie IN CNAME suzi.nobreak.com.
suzi IN CNAME mailhub.nobreak.com.
mailhub IN A 210.105.79.75
IN MX 10 mailhub.nobreak.com.

layla lookup

1. lookup layla.nobreak.com -> return marie.nobreak.com

2. lookup marie.nobreak.com -> return suzi.nobreak.com

3. lookup suzi.nobreak.com -> return mailhub.nobreak.com

4. lookup mailhub.nobreak.com -> return 210.105.79.75

("layla.nobreak.com" IN MX points to a CNAME marie.nobreak.com)

MTA Sendmail ()

MX CNAME

BIND Syslog MTA가

layla IN MX 10 mailhub.nobreak.com.
marie IN CNAME mailhub.nobreak.com.
suzi IN CNAME mailhub.nobreak.com.
mailhub IN A 210.105.79.75
IN MX 10 mailhub.nobreak.com.

Sendmail CNAME
user@marie.nobreak.com user@mailhub.nobreak.com
To: 가 user@marie.nobreak.com
user@mailhub.nobreak.com
Sendmail Virtual Domain
CNAME
A MX CNAME

5.4. Nonrecursive MX lookup

mailhub
Sendmail MX
)
Nonrecursive
가 mx2
mx1(A

mailhub IN MX 10 mx1.nobreak.com.
mx1 IN MX 10 mx2.nobreak.com.
IN A 210.105.79.231

Sendmail MX CNAME Recursive

, Sendmail MX 가 .

```
mailhub      IN      MX 10  mx1.nobreak.com.
mx1           IN      MX 10  mx2.nobreak.com.
mx2           IN      MX 10  mailhub.nobreak.com. ; Loop
```

5.5. Sendmail Virtual Domain

nobreak.com kr.freebsd.org ,
nobreak@nobreak.com nobreak@kr.freebsd.org .
aliases ,
Sendmail , Sendmail 가
. Sendmail RuleSet, m4, aliases, dbm/btree/hash

Sendmail 8.8 가 ,

```
$ telnet localhost smtp
Trying 127.0.0.1...
220 kfug2.kr.freebsd.org ESMTP Sendmail 8.9.3/8.9.3
```

8.8 , ftp://ftp.sendmail.org/pub/sendmail/
Sendmail 8.2 domaintable Feature , Sendmail
8.8 virtusertable Feature .

5.5.1. m4 sendmail.cf

sendmail-VERSION/cf/cf/ mc , Virtual Domain
virtusertable, genericstable Feature 가 . mc

```
* generic-bsd4.4.mc      freebsd.mc
divert(0)dnl
VERSIONID(`@(#)generic-bsd4.4.mc      8.7 (Berkeley) 5/19/1998')
OSTYPE(bsd4.4)dnl
DOMAIN(generic)dnl
MAILER(local)dnl
MAILER(smtp)dnl
FEATURE(virtusertable, btree /etc/domainaliases.db)dnl
FEATURE(genericstable, btree /etc/useraliases.db)dnl
```

virtusertable Feature (in-bound) RuleSet ,
genericstable Feature (out-bound) (
From:) RuleSet . DNS Forward Zone Reverse Zone
.

btree (domainaliases.db) B-Tree(Berkeley DB)
. 가 hash(Berkeley DB) dbm(NDBM)
btree(Berkeley DB) > hash(Berkeley DB) > dbm(NDBM) . 가 btree hash
Berkeley DB(FreeBSD) Unix)가
sendmail makemap -DNEWDB (Berkeley DB가 -DNEWDB ,
가) .

Berkeley DB가 -DNDBM (NDBM Unix
) DBM Berkeley DB GNU
GDBM DB .

freebsd.mc m4(Macro Language Processor) sendmail.cf .


```
# cd sendmail-VERSION/cf/cf
# m4 ../m4/cf.m4 freebsd.mc > freebsd.cf
# cp freebsd.cf /etc/sendmail.cf
```

```

      sendmail.cf가
      sendmail.cf
sendmail.cf      )      ,      Feature가      RuleSet
                        . (RuleSet      m4

```

```
* FEATURE(virtusertable, btree /etc/domainaliases.db)dnl
# Virtual user table (maps incoming users)
Kvirtuser btree /etc/domainaliases.db

# handle virtual users (RuleSet 0 Parse1
R$+ < @ $=w . > $: < $(virtuser $1 @ $2 $@ $1 $: @ $) > $1 < @ $2 . >
R<@> $+ + $* < @ $* . > $: < $(virtuser $1 + * @ $3 $@ $1 $: @ $) > $1 + $2 < @ $3 . >
R<@> $+ + $* < @ $* . > $: < $(virtuser $1 @ $3 $@ $1 $: @ $) > $1 + $2 < @ $3 . >
R<@> $+ < @ $+ . > $: < $(virtuser @ $2 $@ $1 $: @ $) > $1 < @ $2 . >
R<@> $+ $: $1
R< error : $- $+ > $* $#error $@ $(dequote $1 $) $: $2
R< $+ > $+ < @ $+ > $: $>97 $1

* FEATURE(genericstable, btree /etc/useraliases.db)dnl
# Generics table (mapping outgoing addresses)
Kgenerics btree /etc/useraliases.db

# handle generics database (RuleSet 93
R$+ < @ $=G . > $: < $1@ $2 > $1 < @ $2 . > @ mark
R$+ < @ *LOCAL* > $: < $1@ $j > $1 < @ *LOCAL* > @ mark
R< $+ > $+ < $* > @ $: < $(generics $1 $: $) > $2 < $3 >
R< > $+ < @ $+ > $: < $(generics $1 $: $) > $1 < @ $2 >
R< $* @ $* > $* < $* > $@ $>3 $1 @ $2 found qualified
R< $+ > $* < $* > $: $>3 $1 @ *LOCAL* found unqualified
R< > $* $: $1 not found
```

5.5.2. Forward - map

```
,      가      w(sendmail.cw)      .
```

```
* /etc/sendmail.cw
nobreak.com
kr.freebsd.org
```

```
domainaliases      Virtual User Table      .
```

```
* /etc/domainaliases
webmaster@nobreak.com      dipper
moonhunt@nobreak.com      moonhunt@ieee.org
cjh@nobreak.com      error:nouser Unknown User
@nobreak.com      nobreak
@kr.freebsd.org      %1@xfree86.org
```

```

      webmaster@nobreak.com      dipper      , moonhunt@nobreak.com
      moonhunt@ieee.org      . cjh@nobreak.com
      'Unknown User'      ,      nobreak.com
nobreak      .      , kr.freebsd.org      xfree86.org
      .      aliases      가      .

```

```
* /etc/domainaliases
announce@kr.freebsd.org      announce.ml
admin@kr.freebsd.org      admin.ml
```

```
* /etc/aliases
announce.ml:           :include:/var/ml/announce.ml
admin.ml:               nobreak, moonhunt@ieee.org
```

5.5.3. Reverse - map

```
      kfug2.kr.freebsd.org      ,      out-bound
user@kfug2.kr.freebsd.org      From      .      Reverse - map
      .

* /etc/useraliases
nobreak      nobreak@nobreak.com
cjh      cjh@kr.freebsd.org
```

5.5.4.

```
      makemap      dbm/btree/hash      .      btree
      .

# makemap btree /etc/domainaliases.db < /etc/domainaliases
# makemap btree /etc/useraliases.db < /etc/useraliases
# ls /etc/domainaliases* /etc/useraliases*
/etc/domainaliases      /etc/useraliases
/etc/domainaliases.db      /etc/useraliases.db

Sendmail      .

# kill -HUP `cat /var/run/sendmail.pid`

# sendmail -bv webmaster@nobreak.com
webmaster@nobreak.com... deliverable: mailer local, user dipper

# sendmail -bv cjh@nobreak.com
cjh@nobreak.com... Unknown User

# sendmail -bv anybody@kr.freebsd.org
anybody@kr.freebsd.org... deliverable: mailer esmtp,
host xfree86.org., user anybody@xfree86.org
```

Chapter 6. BIND /

6.1. BIND

BIND , /var/named/ /var/tmp/ .

HUP

BIND . , Zone .
(Serial 가) , .

INT

```

                                BIND                                $ORIGIN
                                ,                                named_dump.db                                .

ILL(BIND - 8)/IOT(BIND - 4)

                                BIND                                named.stats                                .                                ,                                가

USR1

                                named.run                                . BIND
                                가                                ,                                가

USR2

WINCH

                                BIND                                Syslog                                Syslog                                ,
                                Syslog

```

6.2. BIND Syslog

```

BIND Syslog
                                Syslog                                가                                Syslog                                /etc/syslog.conf
                                ,                                /var/log/messages                                /var/adm/messages                                .

                                , BIND가                                , HUP                                ,

Jan  1  5:33:39 ns named[288]: starting. named 8.2
Jan  2 16:57:11 ns named[291]: reloading nameserver
Feb  5  3:34:31 ns named[289]: named shutting down

Syslog                                '                                named[PID]:                                '                                , BIND - 4
BIND - 8

Feb  1 11:33:40 ns named[288]: master zone "nobreak.com"
(IN) loaded (serial 1999012901)

Zone                                . BIND - 4                                'primary zone'
, BIND - 8                                'master zone'

                                BIND                                . (BIND - 4                                OS                                가                                BIND
Feature                                )

Feb  2 18:57:12 ns named[291]: USAGE 917949432 917837292
CPU=1558.86u/491.54s CHILDCPU=921.29u/1228.57s

Feb  2 18:57:12 ns named[291]: NSTATS 917949432 917837292
Unknown=3 A=95677 NS=3 SOA=275 PTR=563972 MX=11355 TXT=16 AXFR=10 ANY=17840

Feb  2 18:57:12 ns named[291]: XSTATS 917949432 917837292
RR=270905 RNXD=92478 RFwdR=133260 RDupR=505 RFail=8882
RFErr=0 RErr=75 RAXFR=10 RLame=111437 ROpts=0
SSysQ=24028 SAns=467186 SFwdQ=221971 SDupQ=255265 SErr=5319

```

RQ=689151 RIQ=17 RFwdQ=0 RDupQ=224 RTCP=53 SFwdR=133260
SFail=290 SFErr=0 SNaAns=189120 SNXD=186481

2 BIND가 '917949432 -
917837292' , 가 () . USAGE CPU ,
CPU가 1558 (u) , 491 (s) .
CHILDCPU , CHILDCPU 0u/0s .
NSTATS XSTATS BIND Statistics .

Feb 5 09:39:05 ns named[26674]: Sent NOTIFY for "nobreak.com IN SOA"
(nobreak.com); 1 NS, 1 A

BIND-8 Dynamic Update Primary가 Secondary Zone 가
nobreak.com Zone 가

Feb 5 09:36:00 ns named[26674]: ns_forw: query(57.132.119.210.in-addr.arpa)
No possible A RRs

Resolver가 () .
Feb 5 09:35:46 ns named[26674]: Lame server on 'ryu.siyon.com'
(in 'siyon.com?'): [210.105.79.103].53 'ns.mylover.com'

siyon.com ns.mylover.com 가 Authority
Lame Delegation .

6.3. BIND Syslog /

, , 가 .

Feb 3 12:53:27 ns named[291]: ns_forw: query(shpark.co.kr)
contains our address (ns.nobreak.com:210.105.79.2)

shpark.co.kr ns.nobreak.com() , Authority가
Lame Delegation , .

Feb 5 10:09:01 ns named[26674]: "nobreak.com IN NS"
points to a CNAME (ns.nobreak.com)

Feb 5 10:09:11 ns named[26674]: "nms.nobreak.com IN MX"
points to a CNAME (mail.nobreak.com)

Feb 5 09:57:15 ns named[26674]: power.nobreak.com has CNAME and other data

CNAME 가 MX 가 MTA
(:sendmail) 가 , 가 .

nobreak.com. IN NS ns.nobreak.com. ; (X) ns CNAME .
ns IN CNAME mild.nobreak.com.

nms IN MX mail.nobreak.com. ; (X) mail CNAME .
mail IN CNAME mhub.nobreak.com.

power IN CNAME layla.nobreak.com.
IN MX mhub.nobreak.com. ; (X) 가 가 .

CNAME 가 , NS/MX/SOA CNAME

```
Feb  5 09:24:56 ns2 named-xfer[2502]: record too short from
[210.105.79.2], zone nobreak.com
```

Primary NS가 xfrnets(BIND-4) allow-transfer(BIND-8) , Zone Transfer ,
Zone , Zone Transfer가 가

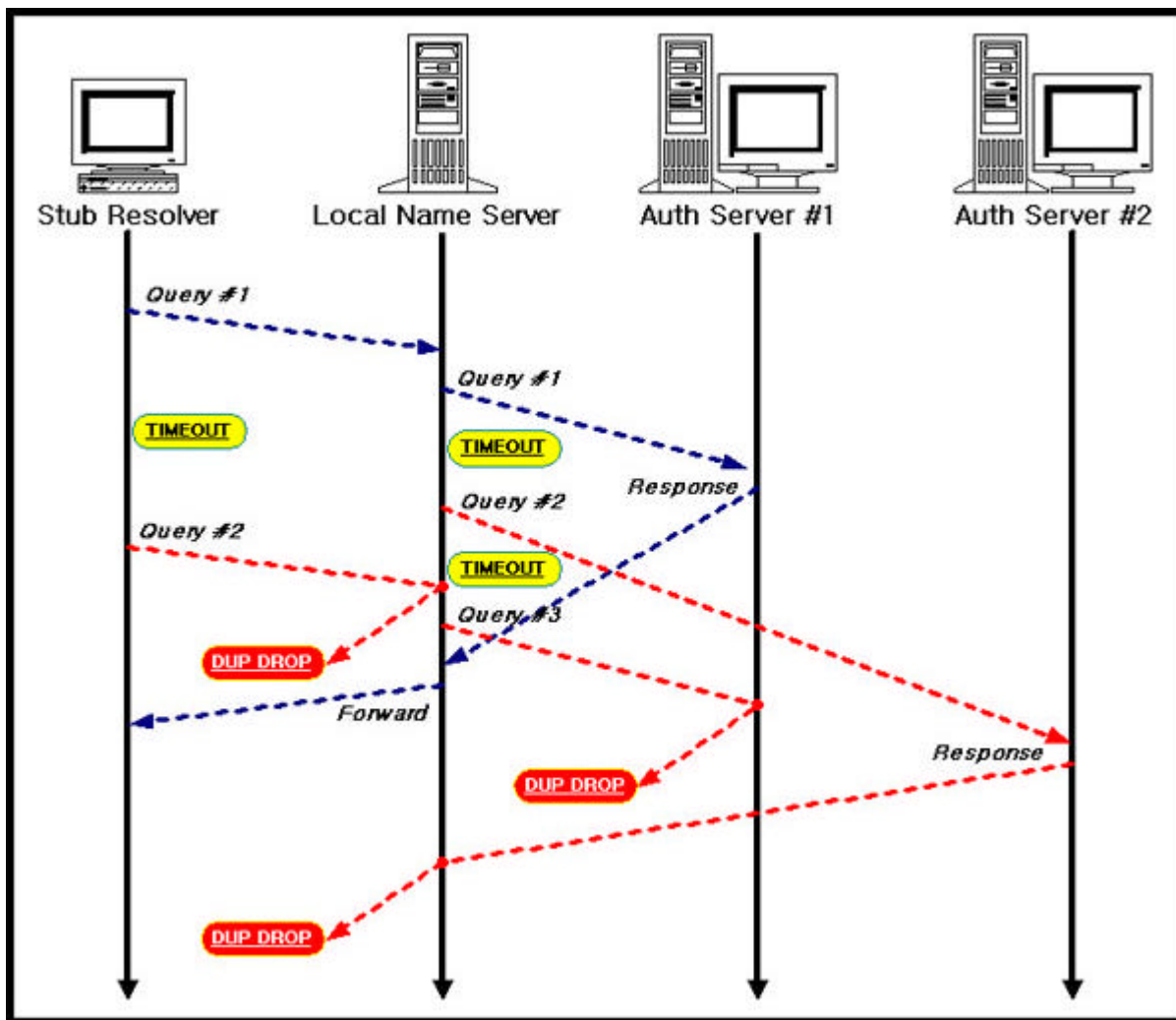
6.4. BIND Statistics

```

가
timeout(DNS . UDP . [ 6]
)

```

Figure 6 - 1.



BIND	ILL(BIND-8)/IOT(BIND-4)
BIND	/var/named/named.stats /var/tmp/named.stats

```
# kill -ILL `cat /var/run/named.pid`
# ls -al /var/named/named.stats
-rw-r--r--  1 root    root      19832 Mar  8 04:51 /var/named/named.stats
```

```
# cat /var/named/named.stats
+++ Statistics Dump +++ (920978301) Tue Mar  9 20:18:21 1999
208719  time since boot (secs)
3396    time since reset (secs)
3        Unknown query types
205739  A queries
39       NS queries
916     SOA queries
802719  PTR queries
19192   MX queries
2        TXT queries
15      AAAA queries
129     AXFR queries
29359   ANY queries
```

```
++ Name Server Statistics ++
(Legend)
RR      RNxD    RFwdR   RDupR   RFail
RFErr   RErr    RAXFR   RLame   ROpts
SSysQ   SAns     SFwdQ   SDupQ   SErr
RQ       RIQ     RFwdQ   RDupQ   RTCP
SFwdR   SFail    SFErr   SNaAns  SNXD
(Global)
447781  164719 227112   869    25991
0        245   125     170586 0
33963    720395 337570 294284 8122
1058113 0      337570 190     0
227112  20791 0       228616 298214
```

```
[210.104.247.129]
157     0      0      0      10
0        0      0     147     0
0        36    146    22     0
36       0      0      0      0
11       0      0      0     13
```

.
.
.

BIND 8.2 .

```
208719  time since boot (secs)
3396    time since reset (secs)
```

BIND가 (HUP)

3 Unknown query types . , 가

205739 A queries

A , 가 .

39 NS queries

Dig BIND , NS . 가 가
Nslookup .

916 SOA queries

SOA Secondary NS가 Zone .

802719 PTR queries

Reverse A 가 .

19192 MX queries

MX Sendmail MTA가 .

2 TXT queries
15 AAAA queries

TXT AAAA Dig Nslookup DNS .

129 AXFR queries

AXFR Secondary가 Zone Transfer , Zone Transfer .

29359 ANY queries

Any Sendmail A, MX, CNAME .

[Global] (Remote Stub Resolver) 가 , [Global]
 , BIND-8 / ,
 (가) .

```
* named.conf (BIND-8)
options {
    host-statistics yes;
};
```

Legend , S(Sent)
 , R(Received) BIND

RR(Sent us an answer) 447781
RQ(Sent us a query) 1058113

RQ 가 (Answer) 가 RR , (Question) 가 RQ . RR

RNXD(Sent us a negative response) 164719
SNXD(Sent them a negative response) 298214

RNXD , . SNXD ,

RFwdR(Sent us a response we had to fwd) 227112
SFwdR(Forwarded a response to them) 227112
RFwdQ(Sent us a query we had to forward) 337570
SFwdQ(Forwarded a query to them) 337570

Resolver Resolver , RFwdR (RR)
 , SFwdR , RFwdQ Resolver (RQ)
 , SFwdQ

RDupR(Sent us an extra answer) 869

RDupQ(Sent us a retry) 190
SDupQ(Sent them a retry) 294284

가 Timeout , /
(Retry)
([6]) . RDupR
(, RDupQ 가
() , SDupQ
가 .

RFail(Sent us a SERVFAIL) 5176
SFail(Sent them a SERVFAIL) 90

RFail (Remote) Zone , Secondary Expire
SERVFAIL SERVFAIL . SFail
SERVFAIL .

RFErr(Sent us a FORMERR) 0
SFErr(Sent them a FORMERR) 0

RFErr FORMERR . FORMERR 가 가
SFErr FORMERR
가 0 . FORMERR
가

RErr(Sent us some other error) 245
SErr(Sent failed) 8122

SERVFAIL FORMERR / RErr/SErr .

RAXFR(Sent us an AXFR) 125

AXFR Secondary가 Zone Transfer . 가 0
가 Secondary

RLame(Sent us a lame delegation) 170586

Authority가 0 .
Primary Secondary .

ROpts(Sent us some IP options) 0

IP , ROpts가 가 .

SSysQ(Sent them a sysquery) 33963

()

RIQ(Sent us an inverse query) 0

RIQ Reserve Domain , BIND PTR queries
RIQ 0 .

RTCP(Sent us a query using TCP) 0

RTCP TCP . UDP /
0 , .

SAns(Sent them an answer) 720395
SNaAns(Sent them a non-authoritative answer) 228616

6.5. BIND Debugging Output

```
BIND
BIND
BIND

# kill -USR1 `cat /var/run/named.pid` (or 'ndc trace')
# ping www.openbsd.org.
# kill -USR2 `cat /var/run/named.pid` (or 'ndc notrace')
# ls -al /var/named/named.run
-rw-r--r-- 1 root bin 1153 Mar 10 00:30 named.run

BIND USR1
/var/named/named.run
/var/tmp/named.run
USR2
BIND
named -

d 1 &

datagram from [210.105.79.6].3442, fd 21, len 33;

210.105.79.6 3442 33 byte UDP
IP ( listen ) bound

req: nlookup(www.openbsd.org) id 28375 type=1 class=1

datagram www.openbsd.org (req) IN
(class=1) A(type=1) 28375

req: missed 'www.openbsd.org' as '' (cname=0)

) ( 가 Authority
cname=0 www.openbsd.org 가 CNAME
BIND가 CNAME

0 CNAME 가

forw: forw -> [198.41.0.10].53 ds=23 nsid=19461 id=28375 5ms retry 4sec

lookup 'J.ROOT-SERVERS.NET(198.41.0.10:53)'

datagram from [198.41.0.10].53, fd 21, len 449;
;; ->>HEADER<<- opcode: QUERY, status: NOERROR, id: 19461
;; flags: qr, Ques: 1, Ans: 0, Auth: 12, Addit: 12
;; QUESTIONS:
;; www.openbsd.org, type = A, class = IN

;; AUTHORITY RECORDS:
ORG. 518400 IN NS A.ROOT-SERVERS.NET.
ORG. 518400 IN NS I.ROOT-SERVERS.NET.
ORG. 518400 IN NS K.GTLD-SERVERS.NET.

;; ADDITIONAL RECORDS:
A.ROOT-SERVERS.NET. 3600000 IN A 198.41.0.4
```

```
I.ROOT-SERVERS.NET. 3600000 IN A 192.36.148.17
K.GTLD-SERVERS.NET. 518400 IN A 195.8.99.11
```

```
J.ROOT-SERVERS.NET . delegation
. .
```

```
resp: nlookup(www.openbsd.org) qtype=1
```

```
www.openbsd.org. .
```

```
resp: found 'www.openbsd.org' as 'org' (cname=0)
resp: forw -> [195.8.99.11].53 ds=23 nsid=19462 id=28375 1ms
```

```
(195.8.99.11)' , ORG , 'K.GTLD-SERVERS.NET
```

```
datagram from [195.8.99.11].53, fd 21, len 219;
;; ->>HEADER<<- opcode: QUERY, status: NOERROR, id: 19462
;; flags: qr rd; Ques: 1, Ans: 0, Auth: 5, Addit: 3
;; QUESTIONS:
;; www.openbsd.org, type = A, class = IN
```

```
;; AUTHORITY RECORDS:
OPENBSD.org. 172800 IN NS ZEUS.THEOS.COM.
OPENBSD.org. 172800 IN NS CVS.OPENBSD.org.
OPENBSD.org. 172800 IN NS NS.SIGMASOFT.COM.
```

```
;; ADDITIONAL RECORDS:
ZEUS.THEOS.COM. 172800 IN A 199.185.137.1
CVS.OPENBSD.org. 172800 IN A 199.185.137.3
NS.SIGMASOFT.COM. 172800 IN A 209.249.129.35
```

```
K.GTLD-SERVERS.NET .
```

```
resp: nlookup(www.openbsd.org) qtype=1
resp: found 'www.openbsd.org' as 'openbsd.org' (cname=0)
```

```
www.openbsd.org. , openbsd.org. .
```

```
resp: forw -> [199.185.137.3].53 ds=23 nsid=19467 id=28375 22ms
datagram from [199.185.137.3].53, fd 21, len 272;
```

```
CVS.OPENBSD.ORG(199.185.137.3) , (A) . (
1 ,
)
```

```
send_msg -> [210.105.79.6].3442 (UDP 21) id=28375
```

```
, 28375 가
```

Chapter 7. DNS

7.1. NSLOOKUP

```
가 . Resolver
nslookup dig 가
```

```
$ nslookup
Default Server: ns.nobreak.com
Address: 210.105.79.2
> exit
```

```
nslookup ' > ' /etc/resolv.conf
. nslookup BIND 'Default NS ->
Timeout -> Error' .
```

7.1.1.

```
nslookup A , IP (in-addr.arpa)
PTR . set type=RR A , RR
(Resource Record) A, ANY, CNAME, HINFO, MX, NS, PTR, SOA, TXT . ANY
```

```
> www.kr.freebsd.org. # IP
Name: www.kr.freebsd.org
Address: 150.183.110.39

> ftp.kr.freebsd.org. # ftp www CNAME
Name: www.kr.freebsd.org
Address: 150.183.110.39
Aliases: ftp.kr.freebsd.org

> 150.183.110.39 #
Name: www.kr.freebsd.org
Address: 150.183.110.39

> set type=MX # MX
> kr.freebsd.org.
kr.freebsd.org preference = 10, mail exchanger = mail.kr.freebsd.org

> set type=NS # NS
> kr.freebsd.org. #
kr.freebsd.org nameserver = ns.kr.freebsd.org
kr.freebsd.org nameserver = ns2.kr.freebsd.org
ns.kr.freebsd.org internet address = 150.183.110.2
ns2.kr.freebsd.org internet address = 150.183.110.3

> 46.102.39.in-addr.arpa. #
kr.freebsd.org nameserver = ns.kr.freebsd.org
kr.freebsd.org nameserver = ns2.kr.freebsd.org
ns.kr.freebsd.org internet address = 150.183.110.2
ns2.kr.freebsd.org internet address = 150.183.110.3
```

7.1.2.

```
nslookup recurse Authority
Authoritative ( 가 ) 가 . server,
lserver ( 가 )
, server , lserver
(nslookup ) . lserver 가 ,
. .
```

```
$ nslookup
Default Server: ns.nobreak.com
Address: 210.105.79.2
```



```

      ORG
- B.ROOT-SERVERS.NET
  128.9.0.107
  ORG
...

```

ORG. 가

```

(2)
> server h.root-servers.net.
> www.kr.freebsd.org.
Server: h.root-servers.net
Address: 128.63.2.53

```

```

Name: www.kr.freebsd.org
Served by:
- WHO.CDROM.COM
  204.216.27.3
  FREEBSD.ORG
- NS1.CRL.COM
  165.113.1.36
  FREEBSD.ORG
- NS2.CRL.COM
  165.113.61.37
  FREEBSD.ORG

```

```

(3)
> server who.cdrom.com.
> www.kr.freebsd.org.
Server: who.cdrom.com
Address: 204.216.27.3

```

```

Name: www.kr.freebsd.org
Served by:
- ns.kr.freebsd.org
  150.183.110.2
  kr.freebsd.org
- ns2.kr.freebsd.org
  150.183.110.3
  kr.freebsd.org

```

```

(4)
> server ns.kr.freebsd.org.
> www.kr.freebsd.org.
Server: ns.kr.freebsd.org
Address: 150.183.110.2

```

```

Name: www.kr.freebsd.org
Address: 150.183.110.39

```

7.1.4. Zone Transfer

Zone Transfer	Zone	, Primary	Zone
가	Zone	Secondary NS	가
Zone Transfer	Authority		, nslookup
	, ls		NS

```

> server ns.kr.freebsd.org.
> ls -t A kr.freebsd.org.
kr.freebsd.org.
kr.freebsd.org.
mail
mqueue
www
www2
# A
server = ns.kr.freebsd.org
server = ns2.kr.freebsd.org
150.183.110.32
150.183.110.33
150.183.110.39
150.183.110.40

```

```

> ls -d kr.freebsd.org.      #
kr.freebsd.org.             SOA  ns.nobreak.com hostmaster.kr.freebsd.org.
                             (1999031501 21600 1800 1209600 86400)
kr.freebsd.org.             NS   ns.nobreak.com
kr.freebsd.org.             NS   ns2.nobreak.com
kr.freebsd.org.             MX   10  mail.kr.freebsd.org
kr.freebsd.org.             MX   20  mqueue.kr.freebsd.org
cvsup                       CNAME www.kr.freebsd.org
mail                         A     150.183.110.32
mqueue                      A     150.183.110.33
ftp                         CNAME www.kr.freebsd.org
ftp2                        CNAME www2.kr.freebsd.org
ftp3                        CNAME ftp.free.nobreak.com
www                         A     150.183.110.39
www                         HINFO Pentium-200 FreeBSD 2.2.8
www                         TXT   "Korea FreeBSD Users Group"
www2                        A     150.183.110.40
www2                        HINFO Pentium-133MHz FreeBSD 2.2.8
www2                        TXT   "Korea FreeBSD Users Group"

> ls -t MX kr.freebsd.org > MX-kr.freebsd.org #
> view MX-kr.freebsd.org #

```

```

BIND      named-xfer      Zone Transfer      .
Secondary

```

```

secondary      kr.freebsd.org 210.105.79.2      sec-kr.freebsd.org

```

```

BIND      secondary      .

```

```

loop(Interval == TTL) {
    named-xfer -z kr.freebsd.org -f /var/named/sec-kr.freebsd.org -s Current_Serial 210.105.79.2
    switch ( $? ) {          // named-xfer      '$?'
        case 0 : OK; //      , Zone Transfer가
        case 1 : OK; //      가      , Zone Transfer가
        case 2 : ERROR; //
        case 3 : ERROR: //      가      Authority
    }
    primary kr.freebsd.org sec-kr.freebsd.org
}

```

```

NS      ( : Secondary NS's IP      Zone Transfer      , Primary
        . (Zone Transfer
        )

```

```

xfrnets 210.105.79.3&255.255.255.255 210.105.80.128&255.255.255.128

```

```

BIND-4      , IP 210.105.79.3 210.105.80.129-254      Zone Transfer
. BIND-4      IP      "IP&Mask"
,      210.105.79.0

```

```

options {
    allow-transfer { localnets; 210.105.79.3; };
};

```

```

BIND-8      가      , 210.105.79.3      . localnets
any, none, localhost 가

```

7.1.5. .nslookuprc

```

nslookup      ~ /nslookuprc      ,

```

7.2. DIG

ADDITIONAL SECTION

7.3. DNSWALK

Dnswalk Zone Transfer Dig Resolver

. Delegation 가

Chapter 8. Miscellaneous

8.1. FQDN(Fully Qualified Domain Name)

FQDN , YAHOO.COM.
 , WWW.YAHOO.COM. FQDN
 , Namespace
www(), yahoo.com.(), www.yahoo.com.(FQDN)
('.')

8.2. DNS BIND

DNS Domain Name System ,
IP , Resolver
 , DNS
BIND Berkeley Internet Name Domain , DNS
DNS . BIND
 , 가

8.3. BIND-4(Traditional) BIND-8(Next Generation) 가

BIND 1999 1 BIND-4 BIND-8 가 가 . 1998 5 11 4.9.7
 BIND-4 가 , BIND-8 가 8.2 . BIND-8
 RFC2136, RFC1996 OS 가 BIND-4
 , 가 BIND-8 가
 BIND-4 BIND-8 , BIND-4 named.boot
 , BIND-8 named.conf , BIND-8 Zone
 , BIND-4 BIND-8

8.4. (Public Domain)

가 resolving

8.5. CNAME

CNAME DNS 가 . A
 , CNAME CNAME ' / '

가 , RFC , BIND implementation , CNAME
 Aliasing , CNAME
 IP가
 , CNAME
 , CNAME (MX, SOA, NS) CNAME

8.6. Zone

Zone

- TAB
- TTL 2D, 1W
- , FQDN

ftp	IN	MX	mail
www	IN	CNAME	power
ftp.nobreak.com.	IN	MX	mail.nobreak.com.
www.nobreak.com.	IN	CNAME	power.nobreak.com.

FQDN CNAME 가

ftp	IN	MX	mail.nobreak.com.
www	IN	CNAME	power.nobreak.com.

- 가 , ,

8.7. (Glue Record)

NS A ,
 ns.nms.nobreak.com

nms.nobreak.com.	IN	NS	ns.nms.nobreak.com.
ns.nms.nobreak.com.	IN	A	150.183.110.2 ;

ns.kr.freebsd.org ,
 freebsd.org NS ns.kr.freebsd.org 가
 ns.nms.nobreak.com ns.kr.freebsd.org IP

nms.nobreak.com.	IN	NS	ns.nms.nobreak.com. ; (X)
ns.nms.nobreak.com.	IN	A	210.105.79.2

nms.nobreak.com.	IN	NS	ns.kr.freebsd.org. ; (0)
------------------	----	----	--------------------------

가 IP 가

8.8. Lame Delegation

Lame delegation Namespace .

nms.nobreak.com	IN	NS	ns.nms.nobreak.com.
	IN	NS	ns2.nms.nobreak.com.

nms.nobreak.com 가
Authority , Primary, Secondary 가 Lame
delegation .

8.9. Authoritative answer & Non-authoritative answer

Name Server 가
Namespace Resolving TTL(Time
To Live) , TTL Resolving
가 Non-authoritative answer 가 TTL
Primary 가 Authoritative
answer .

8.10. Positive & Negative Caching

Resolving .

```
$ finger @kfug.kr.freebsd.org
$ talk nobreak@kfug.kr.freebsd.org
```

, , ?
 가 가 ,
 가 Negative ,
Positive .

, named가
 , 가 Zone (kill -HUP) .

8.11. Iterative(Nonrecursive) & Recursive

가 Recursive , (Stub Resolver)
Namespace Iterative (Recursive
) , 가 NS .
 , Iterative (Iterative
Iterative 가)
 , (:resolv.conf, DNS) 가
 . BIND-4 'options no-recursion' 가 , Iterative
 , BIND-8 options 'recursion no;' .

8.12. RTT(Round Trip Time) Nameserver

Round Trip Time (Recursive 가, Authority NS RTT 가 RTT 가 가)

8.13.

: RFC1034 p25

Zone (*) .

```
*      IN      A      210.105.79.20
```

Zone _____, Zone _____
 _____ MX _____

* IN MX mail

가 .) , MX MX , . (

www.* IN A 210.105.79.20

www.ANYTHING.nobreak.com

8.14. Serial Number

Serial
, 19990205010

- Secondary Zone (Zone Transfer) , Primary Zone Serial BIND . Secondary
- Secondary가 '0' Serial Zone , 가 , Zone Serial '0' , Refresh

```
nslookup -type=SOA kr.freebsd.org ns2.nobreak.com
```

Secondry가 Zone Serial

8.15. IP TTL

(6000sec) , TTL 10

www 6000 IN A 210.105.79.6

가 TTL 0 , 가

Maximum Propagation Delay Time(Resolving TTL + SOA Refresh) (IP 가

) , 1-2 TTL , 가

, SOA Minimum Zone .

8.16.

가 , 가

, 가

, Shuffle Addresses BIND 4.9

www 180 IN A 210.105.79.101

180 IN A 210.105.79.102

180 IN A 210.105.79.103

IP ,

\$ nslookup www.nobreak.com

Name: www.nobreak.com

Addresses: 210.105.79.101, 210.105.79.102, 210.105.79.103

\$ nslookup www.nobreak.com

Name: www.nobreak.com

Addresses: 210.105.79.102, 210.105.79.103, 210.105.79.101

\$ nslookup www.nobreak.com

Name: www.nobreak.com

Addresses: 210.105.79.103, 210.105.79.101, 210.105.79.102

(Load Balancing) , 3

, TTL

(TTL)

CNAME CNAME

options {

multiple-cnames yes;

};

BIND-8 가 , YAHOO!(www.yahoo.com)가

A	Resolver	NS가 Authority NS	IP(CNAME) NS가 Resolver
		가 , TTL	

Aliases: www.nobreak.com

(Clustering)

Chapter 9. Bibliography

1. Paul Albitz & Cricket Liu, "DNS and BIND 3rd Edition", O'Reilly & Associates, Inc., ISBN 1 - 56592-512-2, Sep 1998
 2. Paul Albitz, Matt Larson & Cricket Liu, "DNS on Windows NT", O'Reilly & Associates, ISBN 1 - 56592-511-4, Oct 1998
 3. Bryan Costales & Eric Allman, "sendmail 2nd Edition", O'Reilly & Associates, ISBN 1 - 56592-222-0, Jan 1997
 4. Bryan Costales & Eric Allman, "sendmail Desktop Reference", O'Reilly & Associates, ISBN 1 - 56592-278-6, Mar 1997
 5. H. Eidnes, G. de Groot & P. Vixie, "Classless IN-ADDR.ARPA delegation", RFC2317, Mar 1998
 6. M. Andrews, "Negative Caching of DNS Queries (DNS NCACHE)", RFC2308, Mar 1998
 7. O. Vaughan, "A Legal Basis for Domain Name Allocation", RFC2240, Nov 1997
 8. M. Hamilton, "Use of DNS Aliases for Network Services", RFC2219, Oct 1997
 9. R. Elz, R. Bush & S. Bradner, "Selection and Operation of Secondary DNS Servers", RFC2182, Jul 1997
 10. S. Thomson, Y. Rekhter & J. Bound, "Dynamic Updates in the Domain Name System (DNS UPDATE)", RFC2136, Apr 1997
 11. P. Vixie, "A Mechanism for Prompt Notification of Zone Changes (DNS NOTIFY)", RFC1996, Aug 1996
 12. C. Everhart, L. Mamakos & R. Ullmann, "New DNS RR Definitions", RFC1183, Oct 1990
 13. P. Mockapetris, "Domain Names - Implementation and Specification", RFC1035, Nov 1987
 14. P. Mockapetris, "Domain Names - Concepts and Facilities", RFC1034, Nov 1987
 15. M. Lottor, "Domain Administrators Operations Guide", RFC1033, Nov 1987
 16. M. Stahl, "Domain Administrators Guide", RFC1032, Nov 1987
-